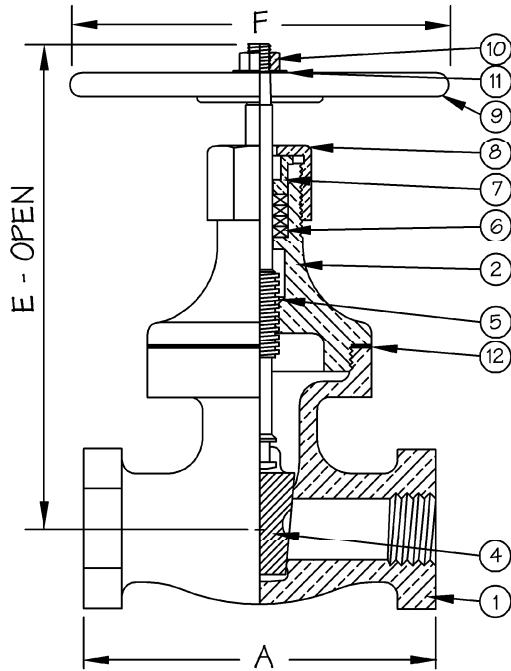


BRONZE GATE

150 PSI, 1/2" - 2"
THREADED END, THREADED BONNET
BRONZE TRIM, (WITH MONEL STEM)

FIGURE NO. B101A-TB



| BILL OF MATERIALS | | | |
|-------------------|---------------|------------------|---------------------|
| | PART | MATERIAL | SPEC. |
| 1 | BODY | BRONZE | ASTM B61 or B62 |
| 2 | BONNET | BRONZE | ASTM B61 or B62 |
| 4 | WEDGE | BRONZE | ASTM B61 or B62 |
| 5 | STEM | NI-CU ALLOY | QQ-N-281 |
| 6 | STEM PACKING | GRAPHITE | COMMERCIAL |
| 7 | PACKING GLAND | NI-CU ALLOY | QQ-N-281 |
| 8 | PACKING NUT | BRONZE | ASTM B61 or B62 |
| 9 | HANDWHEEL | ALUMINUM | COMMERCIAL |
| 10 | HANDWHEEL NUT | SILICON BRONZE | ASTM B98 |
| 11 | WASHER/TAG | BRASS/ALUMINUM | COMMERCIAL |
| 12 | BONNET GASKET | SYNTHETIC RUBBER | MIL-PRF-1149, CL. 2 |

DIMENSIONS

| SIZE | 1/2 | 3/4 | 1 | 1-1/2 | 2 |
|------|------------------|-----------------|------------------|------------------|-----------------|
| A | 2 $\frac{5}{16}$ | 4 | 4 $\frac{1}{4}$ | 4 $\frac{3}{8}$ | 5 $\frac{1}{2}$ |
| E | 5 $\frac{3}{8}$ | 8 $\frac{7}{8}$ | 10 $\frac{3}{4}$ | 11 $\frac{5}{8}$ | 13 |
| F | 2 $\frac{1}{2}$ | 3 $\frac{1}{2}$ | 3 $\frac{1}{2}$ | 3 $\frac{1}{2}$ | 4 $\frac{3}{8}$ |
| WT | 3 | 6 | 9 | 13 | 20 |

